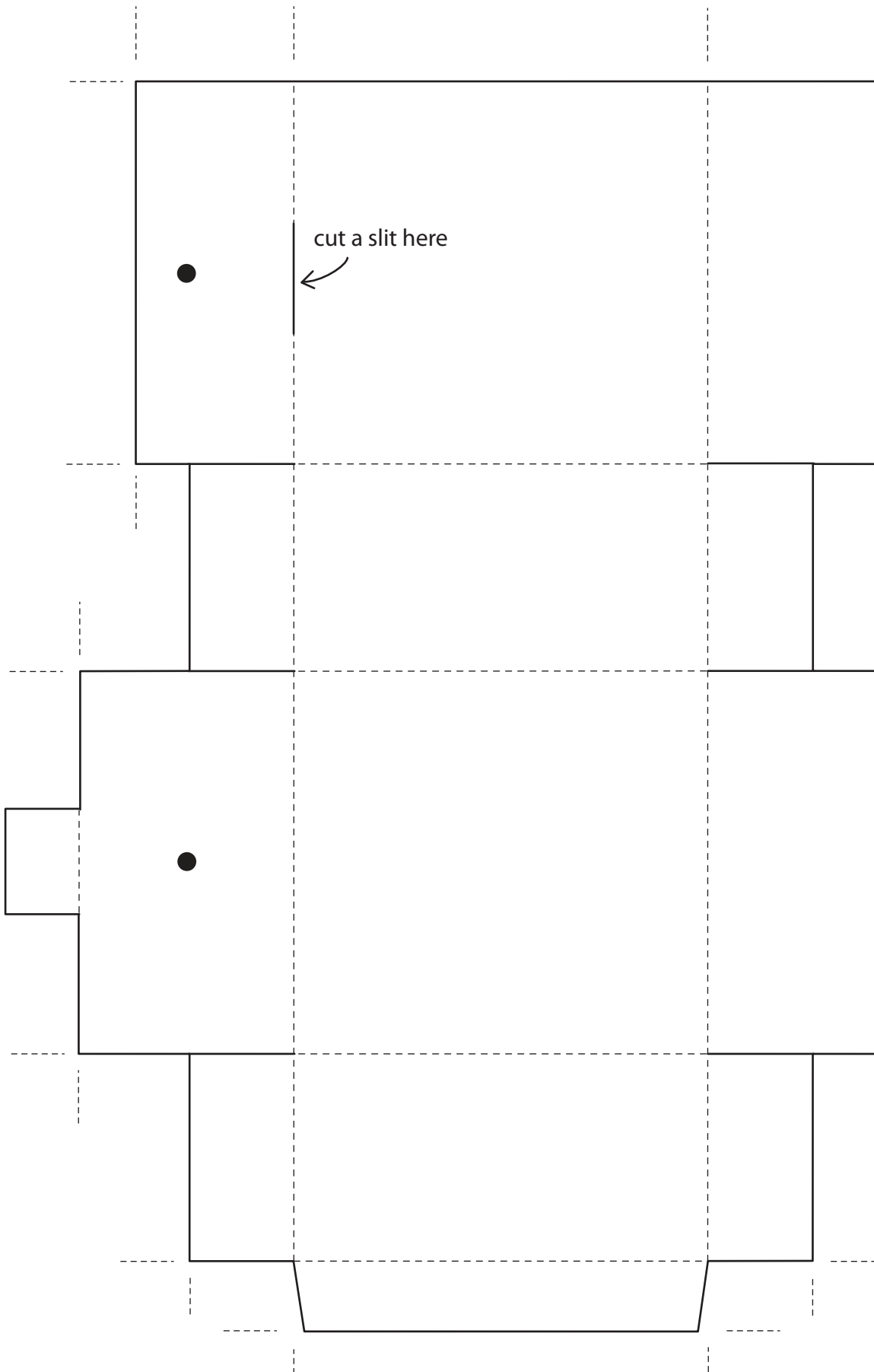


treat box TEMPLATE



1. Tack template onto black cardstock. Using a steel edge ruler and a utility knife, cut along the solid lines. Crease along dotted lines with a bone folder. Make holes at dots using a 1/8-inch hole punch.

2. Form template into box. Using a glue stick, adhere bottom and side flaps in place, leaving top open. Fill box with candy of your choice.

3. Cut an 8-inch length of 1/4-inch-wide ribbon, and knot ends to form a loop. Thread looped end up through top flap without the tab, and then up through top flap with the tab. To close box, tuck tab into slit at top of box.

